



MetaLIGHT[®] Product Line

Profit from Copper[™]

More B

The demand for more bandwidth is growing worldwide. As the world continues to move toward a digital marketplace, both service provider and enterprise networks are required to support high-bandwidth applications. Service providers and enterprises are now looking to utilize existing copper plant to satisfy their customers' needs for broadband services.

Recent advances in copper transport technologies have transformed the landscape for the delivery of broadband services. Actelis Networks' MetaLIGHT® platforms have broken the traditional limitations of copper as a transport media and are now enabling the delivery of high-quality broadband services over copper. With industry-leading performance, standard compliant and telco-grade quality, Actelis' MetaLIGHT platforms are ideal solutions for service providers' networks, as well as for private enterprise networks.

MetaLIGHT Applications

- Transparent LAN Services
- Broadcast/Digital Video
- Wireless/Cellular Backhaul
- Metro Ethernet Extension
- MDU/MTU Backhaul
- Private Campus Network Inter-Connection
- Fast Internet Access
- DSLAM/NGDLC Backhaul

MetaLIGHT Platforms

Actelis' MetaLIGHT platforms are field-proven, high-performance transport/access platforms that enable service providers and enterprises to utilize their existing copper infrastructure to deliver high-bandwidth, high-quality symmetrical services — Ethernet, TDM or ATM with low delay over multiple copper pairs to distances beyond 18,000 feet/5.5km.

The MetaLIGHT platforms include automatic tools to support quick and easy deployment enabling immediate, incremental broadband service delivery and fast return on investment. The platforms can be used as either point-to-point solutions, utilizing the same MetaLIGHT units for both the CO and CPE, or as point-to-multipoint solutions involving two different models of MetaLIGHT units — one MetaLIGHT CO unit and multiple MetaLIGHT CPE units.

MetaLIGHT Point-to-Point Platforms

MetaLIGHT 50

The MetaLIGHT 50 is a compact, cost-effective Ethernet-in-the-First-Mile (EFM) platform. Available in 1, 2, 4 or 8 pair configurations, the MetaLIGHT 50 can deliver up to 5 Mbps of Ethernet services over a single copper pair to 40 Mbps of Ethernet services over 8 copper pairs. The MetaLIGHT 50's flexibility enables it to operate as either a point-to-point solution or as the CPE for Actelis' MetaLIGHT 130 and MetaLIGHT 1300 point-to-multipoint platforms.

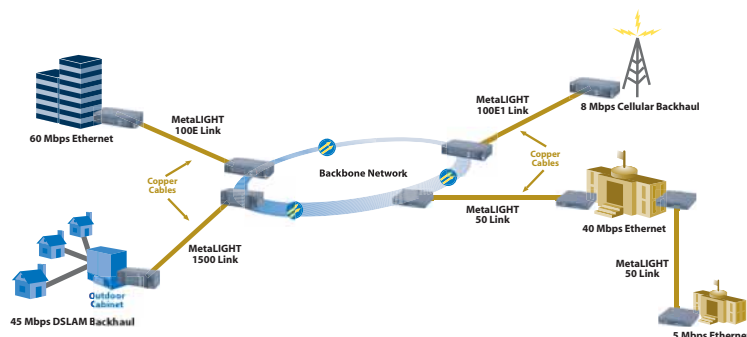


MetaLIGHT 100E

A high-bandwidth platform, the MetaLIGHT 100E is a fiber-quality, point-to-point platform that enables service providers and enterprises to deliver up to 67 Mbps of Ethernet services bonding up to 16 copper pairs.



MetaLIGHT Point-to-Point Platforms



Bandwidth

Minimal Investment

MetaLIGHT 1500

A high-speed, point-to-point, fiber-quality, telco-grade transport platform, the MetaLIGHT 1500 enables service providers and enterprises to deliver a combination of T1s, DS3 (TDM/ATM) services bonding up to 32 copper pairs.



MetaLIGHT 100E1

Designed for the International market, the MetaLIGHT 100E1 is a point-to-point, fiber-quality transport platform that enables service providers and enterprises to deliver high-quality E1 services over the existing copper plant. Its capacity to map the E1s onto bonded copper pairs enables it to carry bandwidth to long distances without the need for repeaters.



MetaLIGHT Point-to-Multipoint Platforms

MetaLIGHT 130

An Ethernet-in-the-First-Mile Platform, the MetaLIGHT 130 is ideal for remote cabinets, rural carrier service areas



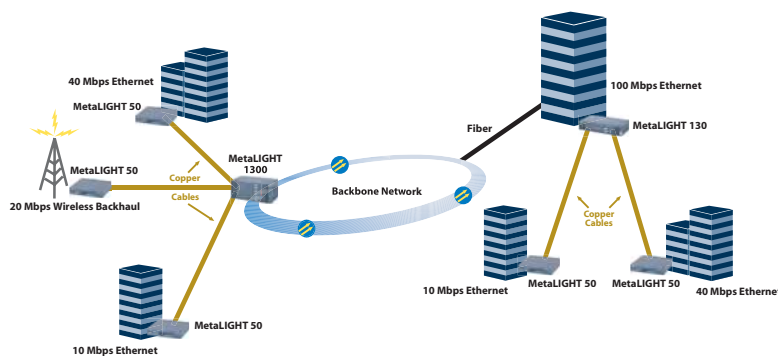
or enterprises. It is a compact, cost-effective, point-to-multipoint platform that can deliver up to 40 Mbps of high-quality, symmetrical Ethernet services to multiple customers or locations on up to 16 copper pairs, from one centralized platform. Up to five shelves can be cascaded to aggregate traffic on up to 80 copper pairs. The aggregated traffic is presented as a single high-speed port to the network side.

MetaLIGHT 1300

The MetaLIGHT 1300 is a high-capacity, cost-effective point-to-multipoint platform that can deliver up to 40 Mbps of high-quality, symmetrical Ethernet services to multiple customers or locations. An Ethernet-in-the-First-Mile platform, the MetaLIGHT 1300 is typically deployed in dense serving areas and can deliver Ethernet services to customers or locations on up to 64 copper pairs. Up to five shelves can be cascaded to aggregate traffic of up to 320 copper pairs. The aggregated traffic is presented as a single high-speed port to the network side.



MetaLIGHT Point-to-Multipoint Platforms



Profit From Copper

MetaLIGHT® Platforms

Easy Deployment

Existing Infrastructure

Management Software

MetaASSIST™ View

The MetaASSIST View (GUI) is a software-based craft management tool that enables local or remote installation, configuration and maintenance of Actelis' MetaLIGHT platforms. With an easy-to-use graphical user interface (GUI), the MetaASSIST View simplifies the management of MetaLIGHT platforms.

MetaASSIST EMS

MetaASSIST EMS is a carrier-class, user-friendly centralized Element Management System (EMS) that is used for real-time planning, provisioning, monitoring and management of heterogeneous networks comprising multiple MetaLIGHT

platforms. The software supports Fault Management, Configuration Management, Performance Management and Security Management.

About Actelis Networks

Actelis Networks is the leading supplier of carrier-grade copper-based broadband platforms. Our award-winning MetaLIGHT platforms provide high-quality, high-bandwidth Ethernet, TDM and ATM services over POTS grade copper. Available in either point-to-point or point-to-multipoint configurations to meet any customer requirements, the MetaLIGHT platforms can extend the reach of a fiber network and provide far greater rate, reach and reliability compared to other copper-based transmission technologies. Proven in lab and field trials, MetaLIGHT platforms are carrying live traffic in networks throughout North America, Europe and Asia.



MetaLIGHT Quick Guide

MetaLIGHT Point-to-Point Platforms

Platform	Maximum Bandwidth	# of Pairs	Services	Interfaces
MetaLIGHT 50	40 Mbps	1-8	Ethernet	1 Ethernet Port
MetaLIGHT 100E	67 Mbps	1-16	Ethernet	2 Ethernet Ports
MetaLIGHT 1500	52 Mbps	1-32	TDM, ATM, Frame Relay	DS3, 4 DS1s
MetaLIGHT 100E1	8 Mbps	1-16	TDM, ATM, Frame Relay	4 E1s

MetaLIGHT Point-to-Multipoint Platforms

Platform	Maximum Bandwidth	# of Pairs	Services	Interfaces
MetaLIGHT 130	40 Mbps per Site	1-16	Ethernet	4 Ethernet Ports, Optional Gig-E
MetaLIGHT 1300	40 Mbps per Site	1-64	Ethernet	4 Ethernet Ports, Optional Gig-E



526R00120E-0304

**Corporate Headquarters
Worldwide Sales Office**
6150 Stevenson Blvd.
Fremont, CA 94538
Tel. 1.866.ACTELIS
Tel. 1.510.545.1045
Fax. 1.510.545.1075
www.actelis.com
sales@actelis.com

EMEA Sales Office
25 Bazel P.O.B. 10173
Petach-Tikva 49103 Israel
Tel. 972.3. 924.3491
Fax. 972.3.924.3492
info.il@actelis.com

©2004 Actelis Networks Inc. Actelis Networks, MetaLIGHT and MetaLOOP are registered trademarks of Actelis Networks, Inc. MetaASSIST, High Speed Link, HSL and Profit from Copper are trademarks of Actelis Networks, Inc. All other trademarks used herein are the property of their owners.